



ibcsLabel

label print



Simple, easy and effective design of logistic and commercial labels in GS1 standard



Drinking milk chocolate, 25 g

Quantity of pieces: 16 x 20 = 320

GTIN: 5900649060296	BEST BEFORE: 2018.01.20
COUNT: 16	BATCH LOT: ABC123
SSCC: 059099990000000310	



(02)05900649060296(37)16



(15)180120(10)ABC123

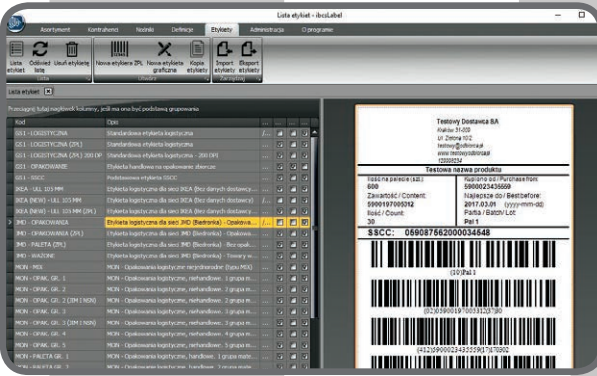
ibcsLabel is a convenient and effective application that enables carrier arrangement, design and print of logistic and product label and data save in archive.

It can be used in companies that deliver goods to recipients that require compliance with GS1 standard for marking supplies (e.g. Jeronima Martins, Netto, Rossmann, IKEA, Tesco and others).

Thanks to ibcsLabel, you can implement the standard fast and cheap and fulfill all requirements of the recipient.




**IBCS
Poland**
Relentless
Innovation



Download demo version

- installation files (setup and ibcsLabel)
- installation and user manual
- licenses
- ibcsLabel folder



Benefits

- Label design and print using native printer programming language (ZPL, IPL,...)
- Simple and fast label design using graphic label editor
- Print of all barcodes and 2D symbolic, text and graphic match on label
- Registration of printed logistic labels history with carrier content. It enables reprint of required labels
- Can be used on all printers with Windows drivers and dedicated label printers by renowned Zebra Technologies, Honeywell, SATO, Datamax
- Label templates management
- Set of templates compliant with Defence Department Decision No. 3 from January 3rd, 2014 and requirements of commercial chains

General requirements for ibcsLabel system

- Computer with Windows 7 OS or higher
- .NET Framework (version 4.0)
- MS SQL database (suggested version 2012)
- Label printer (ZPL by default, also print on any printer installed in Windows OS)